

Adventures in Autism

My Autism Ally Newsletter

DR. SEUSS - THIS SUNDAY

You're Invited!

SENSORY FRIENDLY Dr. Seuss Party!

An event for individuals with disabilities and their siblings to celebrate reading along with games and crafts.

Sunday, March 19th

Noon-3pm

Walb Student Union

Classic Ballroom

Purdue Fort Wayne



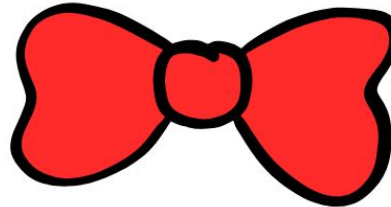
"You're never too old,
too wacky, too wild,
to pick up a book &
read to a child."

Dr. Seuss



PURDUE UNIVERSITY
FORT WAYNE

School of Education



To celebrate Reading across America and Dr. Seuss's birthday, we are once again partnering with Purdue Fort Wayne School of Education to host a **sensory friendly Dr. Seuss Party** and you are invited to be part of the fun! The focus of the event is to celebrate reading, have fun with crafts and games and get valuable information about resources in our community. **This event is FREE.** Join us on **Sunday, March 19th at the Walb Student Union Classic Ballroom on the PFW campus** - 2101 East Coliseum Boulevard Fort Wayne, IN 46805. Here is a campus map to help you. <https://www.pfw.edu/campus-map> You can also check our our Facebook live video to help you find the event on campus. <https://www.facebook.com/myautismally/videos>

TWO NEW Support Groups starting

April 2023!



My Autism Ally is excited to announce TWO new support groups for our autism community starting in April 2023.

Did you know that autistics identify as LGBTQ+ at rate 3 times higher than the general population?

This means approximately 15% of autistics identify as LGBTQ+. We are excited to announce ASPIE- Autism Spectrum Pride. This group is for autistic adults age 18 and older that identify as LBGTQ+. This group will meet monthly on the 2nd Wednesday via Zoom from 6:30-8pm.

If you have questions about the group or wish to attend, contact the group facilitator, Samantha Drudge at sdrudge@myautismally.org

The Adams/Wells Autism Support Group will meet monthly on the 4th Tuesday from 6:30-8pm. This group is our first support group to be hosted outside of Allen County.

Park Community Church
617 South Bennett Street
Bluffton, IN

This group will meet simultaneously in-person and Zoom for caregivers of those on the autism spectrum. On site childcare is available with RSVP required. If you'd like more information about this group or to RSVP childcare email Cyndi Betz at cbetz@myautismally.org

Be sure to check out our support groups available for caregivers and autistic individuals!

- Allen County Autism Support Group
- AWETISM group
- Disability Caregiver Support Group
- Spectrum Sisters

To find out more about these groups and other support group offerings in our community go to our website <https://www.myautismally.org/support-groups>. If you have questions about any of our groups or need Zoom links email us at info@myautismally.org

My Autism Ally - Autism Acceptance Walk

Sunday, September 10, 2023 Noon-3:30pm

**Allen County Fairgrounds
2726 Carroll Road, Fort Wayne, IN**

This event is RAIN OR SHINE and is FREE to attend.



Food Trucks
Vendor Fair
Pony Rides
Music Play
Sensory Play
Face Painting



Petting Zoo
Touch a Truck
Balloon Artists
Crafts and Games
Cosplay and Mascots



The Autism Unity Walk Lap starts at 3pm.

Create your team and join us as we celebrate autism acceptance!

All money raised stays in Northeast Indiana and helps us serve local individuals and families affected by autism through one on one consulting services, autism advocacy, trainings, support groups and other community events.

**Sponsorship and Vendor Opportunities available
contact us at info@myautismally.org**

Find out more about this year's event at our website.

Partnership and Vendor Fair information is also available.

<https://www.myautismally.org/autism-acceptance-walk>

***A HUGE Thank You to our
2023 Autism Acceptance Walk Partners!***



Gordon Homes CFA MassMutual

Bowen Center

**Check out the latest from our
Blog and Podcast**

<https://www.myautismally.org/blog>

<https://www.myautismally.org/podcast>

Sensory Cuts Scholarship

My Autism Ally wants to help families affected by autism and sensory processing disorder that cannot afford the cost of the Sensory Cuts program in our area. If you are in need of financial assistance, we invite you to apply for a scholarship.

Go to <https://www.myautismally.org/scholarshipsandtrainings> for more information.



Does your sensory
sensitive child struggle
with haircuts?

We can help!

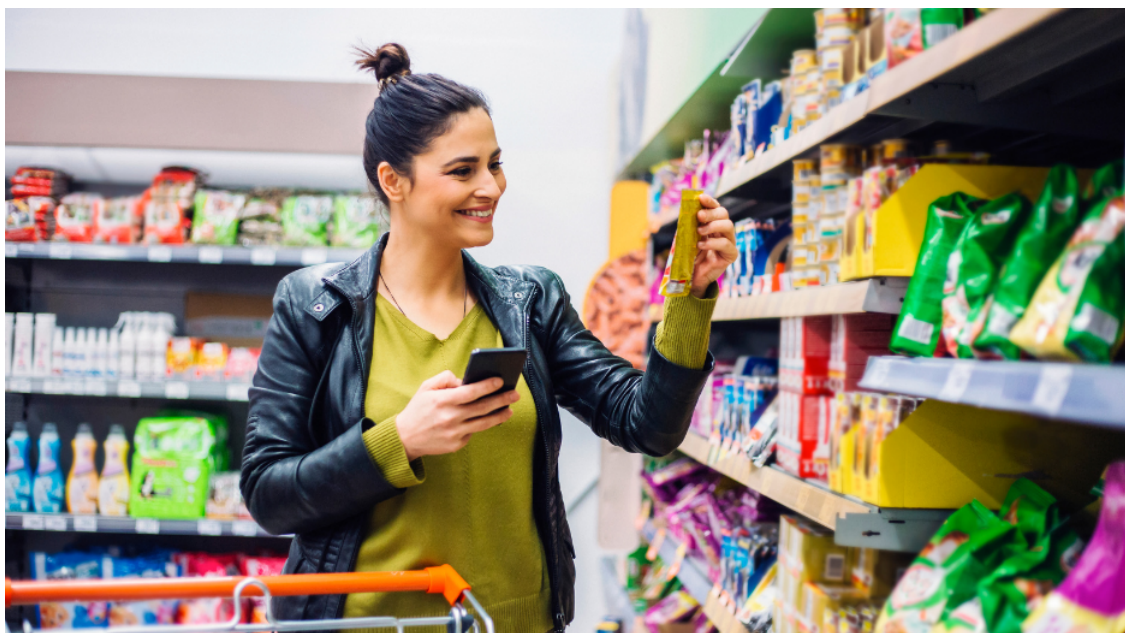
Find out more about our
Sensory Cuts Scholarship
at our website

[myautismally.org](https://www.myautismally.org)



Support My Autism Ally While You Shop

At no additional cost to you!!



You shop, our autism community benefits
at no additional cost to you!
Choose My Autism Ally as you Kroger
Community Rewards charity today!





Copyright © 2023 My Autism Ally, All rights reserved.

Our mailing address is:

My Autism Ally

PO Box 15

Huntertown, IN 46748