



# Upcoming Support Groups & Workshops

## AUTISM 101

This presentation is designed to educate individuals and organizations on basic information about autism.

The Autism 101 presentation highlights behavioral, communication and social challenges individuals with autism often experience. Strategies for assisting individuals on the autism spectrum are also covered. This presentation also highlights the challenges parents and individuals on the spectrum face during daily life. We conclude this presentation with helpful strategies to assist individuals with autism.

The  
Connection  
is You



[Nov. 7th Autism 101 Sign-Up](#)



DADS FOR AUTISM GROUP

# D.A.G.

Meets virtually the 2nd Wednesday of the month  
To register please email [spenaflor@inautism.org](mailto:spenaflor@inautism.org)

**Wednesday, November. 9th**  
**6:30pm**

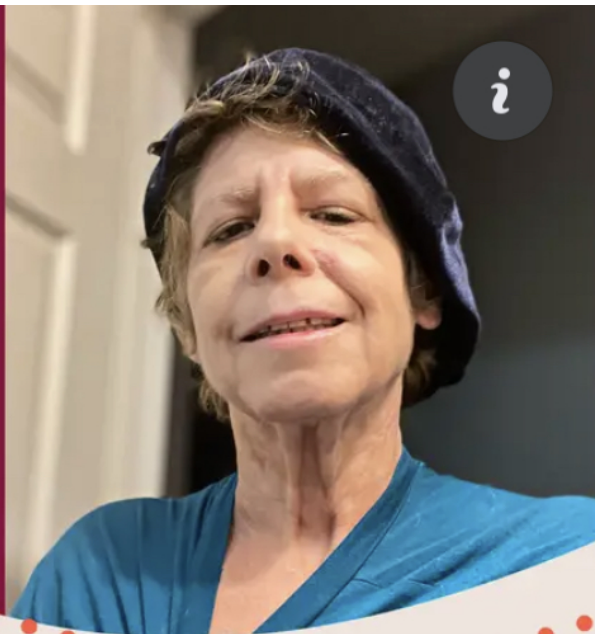


A virtual state wide  
Dads for Autism Group  
for support, community,  
and conversation.

# Guest Post: The Bullying Nobody Names by Kate Gladstone



Autism  
Society



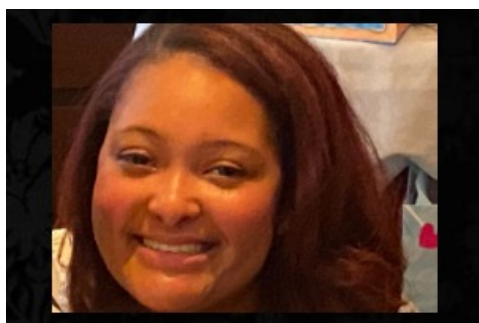
**"Autism is not a rubber stamp, blotting out one's individual identity as if canceling a passport. Autistics, like the rest of the human race, deserve a culture where flourishing is possible."**

**Kate Gladstone, a member of the Autism Society of America's Council of Autistic Advisors, shares a personal account of systematic bullying and provides tips on how we can create a more accepting world for Autistic people.**

[Blog by Kate Gladstone](#)



Did you know  
Autistic  
professionals  
can be up to  
140% more  
productive than  
their  
neurotypical  
coworkers when  
properly  
matched to jobs?



#### **New Executive Director: Courtney Wolley**

The Autism Society of Indiana is pleased to announce that Courtney Wolley has been appointed the new Executive Director. An experienced leader, Courtney brings a wealth of knowledge to her new position, having been the Assistant Executive Director at ASI for the past 3 years. Courtney started her career as a Special Education teacher at a charter school on the southside of Indianapolis. After several years in the classroom and in administration, Courtney began working at ASI in November 2017 in Career Services. In September 2018, Courtney began managing the Direct Care program; over the past 4 years, the program has grown exponentially, providing much needed supports to families across the State of Indiana. A dedicated leader and advocate, Courtney is passionate about furthering ASI's mission and ensuring all affected by autism are connected to the resources they need to thrive. Courtney completed her undergraduate studies at Miami University (OH) and earned a Master of Public Affairs (MPA) from Indiana University – Bloomington. She and her husband, Jeremy, and their two children live in Indianapolis.

